



MACRO-SOLAR

MS-P-30W/32W/34W

Cells

Cell Technology	Polycrystalline silicon
Number of cells per module	36
Cell dimensions	156x39mm

Mechanical Data

Dimension of the module L x W x H	680x417x28mm
Weight	5.2kg

Electrical data

	MS-P-30W	MS-P-32W	MS-P-34W
Maximum power	30W	32W	34W
Open Circuit Voltage	21.60V	21.60V	21.60V
Maximum power point voltage	17.28V	17.28V	17.28V
Short circuit current	1.83A	1.95A	2.07A
Maximum power point current	1.74A	1.86A	1.97A

* At Standard Conditions (STC) Irradiance 1000 watt/m², spectrum AM 1,5 at a cell temperature of 25°C.

Thermal data

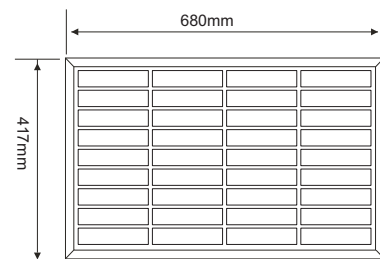
NOCT	47°C ± 2°C
Temperature Coefficient of V _{oc}	- (90 ± 5) mV / °C
Temperature Coefficient of I _{sc}	+ (0.065 ± 0.015) % / °C
Temperature Coefficient of Power	- (0.5 ± 0.05) % / °C

*NOCT: Normal Operational Temperature in Celsius

Additional data

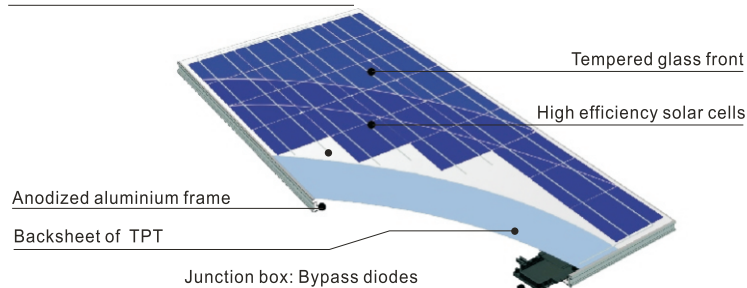
Junction box type	(TUV)
Cable type	(TUV)
Output tolerance	+(-)3%
Frame material	Anodized aluminium
Front glass	3.2mm tempered glass
By-pass diodes	2 pieces

Front

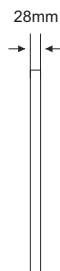


Module Construction

The cells are embedded in EVA



Side



Back

