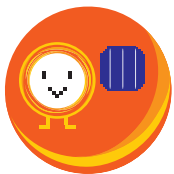


SS-DH SERIES (NR)

Mono Crystalline Solar Panels 310, 320, 325 W /
72 Cells / 3 Bus Bar

High Efficiency, High Performance, Customer Satisfaction

Shinsung Solar Energy satisfies various needs of the customers based on the production of the world's best high efficiency solar modules and by pursuing a product specialization strategy. The company has the most diverse product lines in the industry, and plans to focus on the development of diverse and highly specialized products.



High quality,
high power
Cell efficiency above
19%
Module efficiency of
16.68%



Guarantee products
for 10 years
Guarantee efficiency
for 25 years



-40~+85°C in any
environment to
ensure
high power output



Received 0%
in efficiency
reduction ratio
of the test



Passed the
mechanical load
test of
550kgf/m²(5400Pa)
according to IEC
61215



Product liability
insurance
Financial injury
insurance



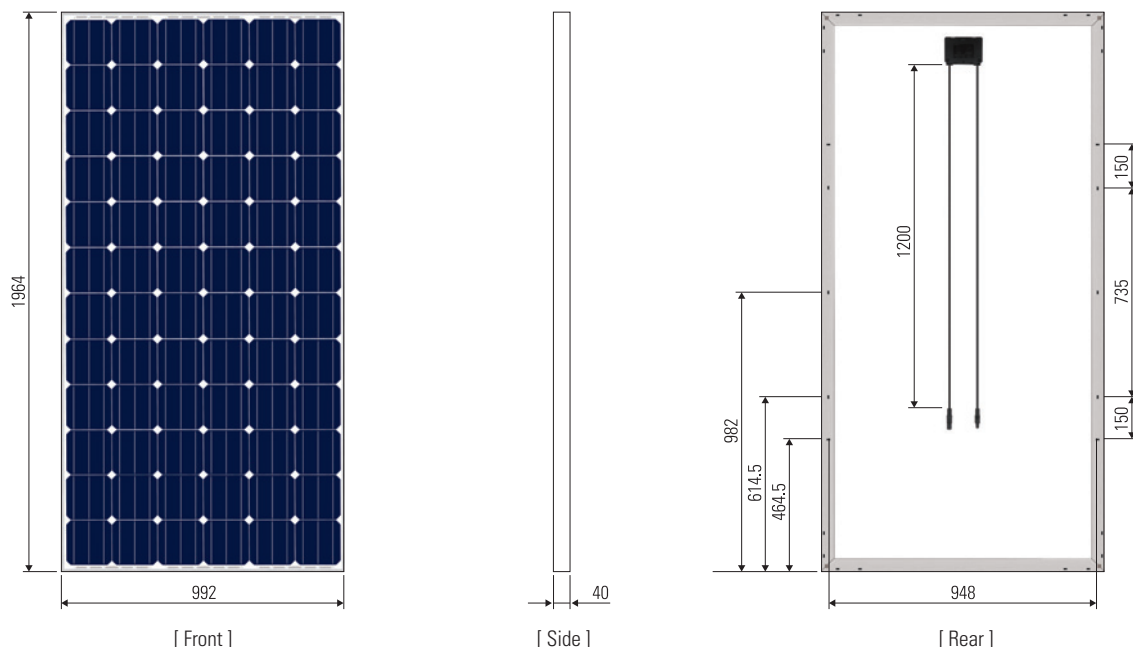
SS-DM SERIES (NR)

**Mono Crystalline Solar Panels 310, 320, 325 W /
72 Cells / 3 Bus Bar**

Copy Right April 2015 Shinsung Solar Energy
Caution : All right reserved. Information may be changed without prior notice.

Dimension

[unit : mm]

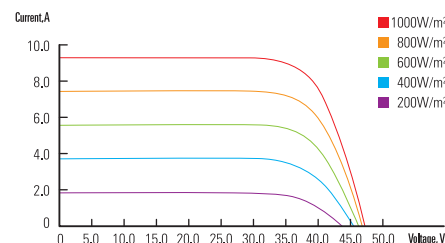


Item	SS-DM310	SS-DM320	SS-DM325
Peak Power(Wp)	310	320	325
Open Circuit Voltage(V)	45.7	45.9	46.0
Short Circuit Current(A)	8.92	9.17	9.29
Voltage at Pmax(V)	36.6	36.8	36.9
Current at Pmax(A)	8.47	8.70	8.81
Efficiency(%)	15.91	16.42	16.68
Dimension(mm)	992 x 1,964 x 40		
Weight(Kg)	23		

※ All data is tested under STC(Standard Test Conditions). Above data may be changed without prior notice.

• Peak power tolerance 0~+3.0% • Please inquire of us about correct data by each Certificate Holder.

I-V Curve



Safety Ratings & Warranties

Fire Safety Classification	Class "C"
Salt-mist Corrosion Test	Tested
Visible Light Reflected	4.20%~4.30% For more information, please contact us.
Warranty	10 Years limited Product Warranty
	10 Years limited Power Warranty : 90%
	25 Years limited Power Warranty : 80%
Certifications	UL 1703, CEC, IEC 61215 Safety Tested IEC 61730

Mechanical Characteristics

Solar Cells	72 Cells (156.75x156.75mm)
Front Glass	Low Iron Tempered Glass
Junction Box	IP 67, 3 Bypass Diode
Output Cable	4mm² Cable, MC 4 (Compatible) Type
Frame	AL Alloy Type (Anodized)

Loading Quantity (unit : pcs)

	60 Cells	72 Cells
Domestic		
2.5-ton	90	50
5-ton	210	150
5-ton+	240	175
11-ton	300	225
Export		
20ft	276	230
40ft	756(Dry) 812(H/Q)	624(Dry) 672(H/Q)

Temperature Coefficient (Cell)

NOCT	47.9(°C)
$\alpha \Delta$ ISC	0.0476(°C/degree)
$\beta \Delta$ VOC	-0.3070(°C/degree)
$\gamma \Delta$ Pmax	-0.3753(°C/degree)

Tested Operation Conditions

Max Load	550kgf/m² (5400Pa)
Impact Resistance	25mm, 23m/s
Operating Temperature	-40 ~ +85°C



- www.shinsung.co.kr
- solar@shinsung.co.kr
- Fax. +82-31-788-9584
- Korean. +82-31-788-9394
- English. +82-31-788-9426
- Japanese. +81-3-3539-6080

