



- MSM260-72M MSM265-72M MSM270-72M
- MSM275-72M MSM280-72M MSM285-72M MSM290-72M
- MSM295-72M MSM300-72M MSM305-72M MSM310-72M

Electrical Specifications

*STC : Irradiance 1000W/m², AM1.5 spectrum, module temperature 25°C

Model type	260-72M	265-72M	270-72M	275-72M	280-72M	285-72M	290-72M	295-72M	300-72M	305-72M	310-72M
Peak power (Pmax)	260W	265W	270W	275W	280W	285W	290W	295W	300W	305W	310W
Cell Efficiency	15.5%	15.8%	16.0%	16.4%	16.8%	17.0%	17.3%	17.6%	18.0%	18.2%	18.5%
Maximum power voltage (Vmp)	35.2V	35.7V	35.7V	35.7V	36.2V	36.2V	36.2V	36.7V	36.7V	36.7V	37.2V
Maximum power current (Imp)	7.39A	7.43A	7.56A	7.72A	7.74A	7.88A	8.01A	8.04A	8.18A	8.32A	8.37A
Open circuit voltage (Voc)	43.6V	44.3V	44.3V	44.3V	44.9V	44.9V	44.9V	45.5V	45.5V	45.5V	46.1V
Short circuit current (Isc)	7.95A	8.02A	8.16A	8.31A	8.36A	8.50A	8.65A	8.68A	8.83A	8.98A	9.0A
Power Tolerance	±3%										
Maximum system voltage	1000VDC										
Series fuse rating (A)	15										
Number of bypass diode	6										

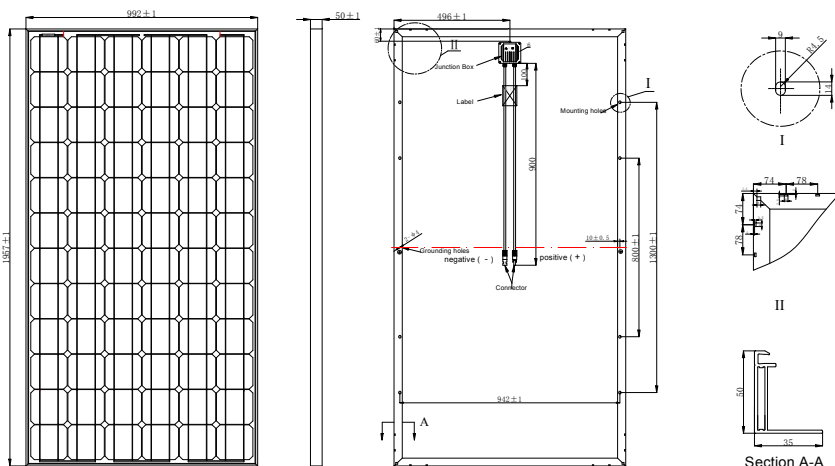
Temperature Coefficients

Current Temperature Coefficient	$\alpha(I_{sc})$	0.03%/°C
Voltage Temperature Coefficient	$\beta(V_{oc})$	-0.32%/°C
Power Temperature Coefficient	$\gamma(P_{max})$	-0.42%/°C

Mechanical Characteristics

Dimensions :	1957 x 992 x 50mm (77.05x39.06x1.97 inch)
Weight:	22.5 kg (49.6 lbs)
Solar Cells:	72 cells in series(6x 12)
Construction:	High-transmission low-iron tempered glass , EVA, TPT
Frame:	Anodized aluminum is mainly for improving corrosion resistance. Color: silver

Module Diagram



Output(Optional)

Cable	LAPP(4 mm ²)
Lengths	900mm(-) and 900(+)
Connector	MC Plug Type IV

Module Warranty:

- 25-year limited warranty of 80% power output;
- 10-year limited warranty of 90% power output;
- 5-year limited warranty of materials and workmanship.

Note: This publication summarizes product warranty and Specifications which are subject to change without notice

Electrical Performance

