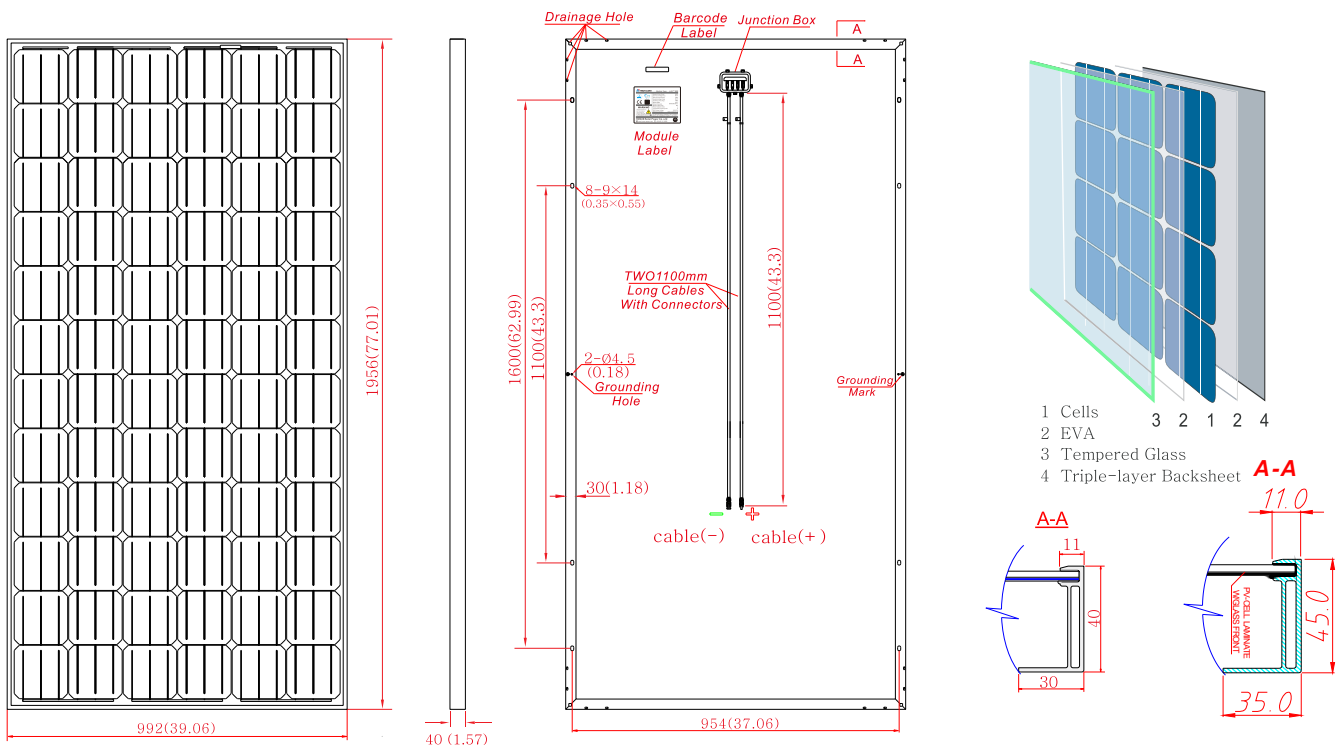


## ELECTRICAL CHARACTERISTICS

Module Type	JHX-330S72	JHX-325S72	JHX-320S72	JHX-315S72	JHX-310S72
Maximum Power at STC (Pmax)	330W	325W	320W	315W	310W
Maximum Power Voltage (Vmp)	37.60V	37.21V	36.82V	36.78V	36.52V
Maximum Power Current (Imp)	8.777A	8.735A	8.692A	8.564A	8.492A
Open Circuit Voltage (Voc)	45.57V	45.36V	45.14V	46.08V	45.85V
Short Circuit Current (Isc)	9.370A	9.297A	9.207A	8.954A	8.493A
Module efficiency	17.0%	16.7%	16.4%	16.2%	15.9%
Maximum System Voltage	DC 1000V(TÜV) / DC 600V(UL)				
Operating Temperature	-40°C to +85°C				
Maximum Series Fuse Rating	15A				
Application Class	Class A				

STC: Irradiation 1000W/m<sup>2</sup>, Module Temperature 25°C, AM=1.5 ; Power Measurement Tolerance:±3%

## PHYSICAL CHARACTERISTICS



## MECHANICAL DATA

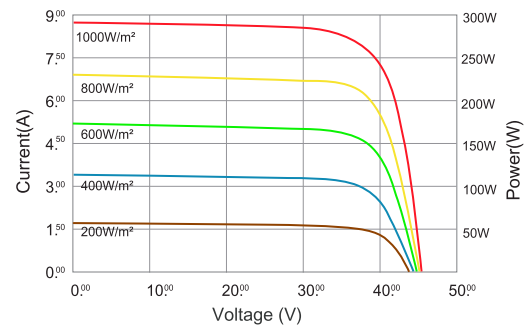
Dimension	1956×992×40mm(77.01×39.06×1.57)
Cell Type	Mono Crystalline Silicon, 156mm × 156mm
Number of Cells	72 cells in series(12×6)
Weight	26.0kg±0.5kg
Front Glass	High Transparency Solar Glass 4.0mm
Frame	Anodized Aluminium Alloy
Junction Box	TÜV: IP65 rated / IP67 rated, 3/6 Diodes
Cable	Photovoltaic Technology 4.0mm <sup>2</sup> , 1100mm.
Connector	MC-4 / DJ2011-4(SHIHE) Compatible

## TEMPERATURE RATINGS

Nominal Operating Cell	47°C(±2°C)
Temperature(NOCT):	
Temperature Coefficient of Pmax	-0.48%/°C
Temperature Coefficient of Voc	-0.34%/°C
Temperature Coefficient of Isc	0.05%/°C

NOCT: Irradiation 800W/m<sup>2</sup>, ambient temperature 20°C, wind speed 1m/s

Current-Voltage & Power-Voltage Curve  
JHX-290S72 (cell temperature: 25°C)



## PACKING CONFIGURATION

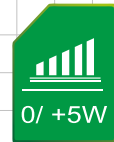
Container	40HC	40HC
Pieces per pallet	50 (40×30)	44 (45×35)
Pallets per container	11	11
Pieces per container	550	484

# JHX-S72XXXW

Peak Power **310-330** wp



Guaranteed 0-5wp plus output tolerance ensures high return on investment



Module efficiency (up to 17.0%) through superior manufacturing technology



Module can bear snow loads up to 5400Pa and wind loads up to 2400Pa



Certified by the most reputable labs according to IEC:61215;IEC:61730-1/2 standards



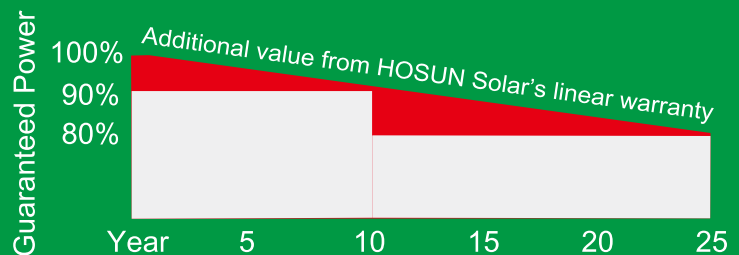
Manufactured and certified according to International Quality and Environment Management System (ISO9001,ISO14001,ISO18000)



linear performance warranty

10 years product warranty

25 years power warranty



**Superior Frame Design**  
Specially designed drainage holes and rigid construction prevent frames from deforming. Screwless frame design for a long term durability.



The new aluminum alloy (without mounting hole) is quicker in installment and better in protecting module, thus saving the mounting expense. It can help to avoid cracks on solar cells caused during the installment.