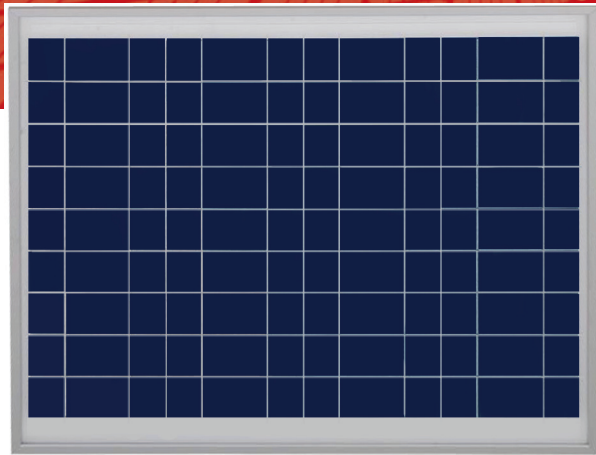
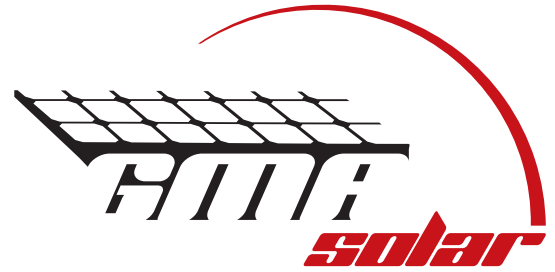


# GMA 36-P Series 50-75W



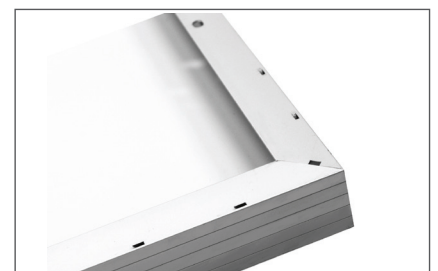
## POWERFUL PERFORMANCE FOR A CLEANER PLANET

- ◆ MANUFACTURED IN MONTREAL, CANADA
- ◆ 25 YEAR LINEAR POWER WARRANTY
- ◆ 12 YEAR WORKMANSHIP WARRANTY
- ◆ OUTSTANDING LOW LIGHT PERFORMANCE
- ◆ MC4 CONNECTORS
- ◆ POSITIVE TOLERANCE +0/5%

**GMASOLAR** introduces the new generation of solar modules. Providing more power by utilizing high efficiency solar cells. Their outstanding performance on energy yield helps our customers to maximize returns on investment specially on grid tie applications.

**GMASOLAR** Reliability. All our solar modules are manufacture according to UL and IEC standards. Each module goes to a strict quality verification on through an EL testing process The EL tester works like a X-ray scanner that immediately exposes every possible hidden defect in the solar panel. This way you get a crystal clear picture of the good operation of the solar panel.

**GMASOLAR** Flexibility. Our solar modules are designed to offer worry free used in the harshest climates. For example, the strong and robust 45mm frame allows installation in multiple configurations, making an easy, safe and faster installation in harshest climates. The water drain holes prevent frame breakage due to freezing temperatures.



**GMA-36-P Series**  
**GMA50P, GMA60P, GMA75P**



**CHARACTERISTIC DATA**

Solar cells per module	36
Type of solar cell	Poly-crystalline solar cells, 156mm x 78mm
Connections	Junction box

**ELECTRICAL PARAMETERS**

Mechanical Data		GMA 50-36	GMA 60-36	GMA 75-36
Power (max.)	Pp (Watts)	50W	60W	70W
Voltage at maximum power point	Vp (Volts)	17.5V	17.0V	17.0V
Current at maximum power point	Ip (Amps)	2.86A	3.53A	4.41A
Open-circuit voltage	Voc (Volts)	22.0V	21.4V	21.4V
Short-circuit current	Isc (Amps)	3.17A	3.92A	4.90A

**DIMENSIONS AND WEIGHTS**

Length	mm (in)	543mm (21.3")	766mm (30.1")	812mm (30.7")
Width	mm (in)	619mm (24.3")	665mm (26.1")	665mm (26.1")
Weight	kg (lbs)	4.8 ± 0.5 kg (9.6 ± 1lbs)	5.5 ± 0.5 kg (11 ± 1lbs)	8.0 ± 0.5 kg (17 ± 1lbs)

**CELL TEMPERATURE COEFFICIENTS**

**LIMITS**

Power	Tk(Pp)	-0.55% /°K	Maximum system voltage	1000V DC
Open-circuit voltage	Tk(Voc)	-0.33% /°K	Operating module temperature	-40 to +90°C
Short circuit current	Tk(Isc)	+0.05% /°K	Wind resistance	Wind speed 192km/h

**WARRANTY & CERTIFICATIONS**

Warranty	12 Year Workmanship, 12 Year 90%, 25 Year 80% Power Warranty
Certifications	IEC 61215, IEC 61730, CE

Note: The specifications are subject to change without notice

