

# LCD Inverter IG3110C

## Off-line Long Back Up UPS

500-2000VA

Personal Computers



Network



### ► Product snapshot:

Model: 500-2000VA

Nominal voltage: 220/230/240VAC

Nominal frequency: 50/60Hz

Output Power factor: 0.6



### Key Features:

- Optional input voltage range.
- Full automatic and silent operation.
- Rack Tower design.
- Automatic charging.
- Built-in with 10Amp or 20Amp optional charger for up to 200Ah battery.
- Auto change AC-DC.
- Over-load protection.
- Automatic restart.
- Three-steps intelligent charging control to recharging
- LCD display, audible and visual alarm

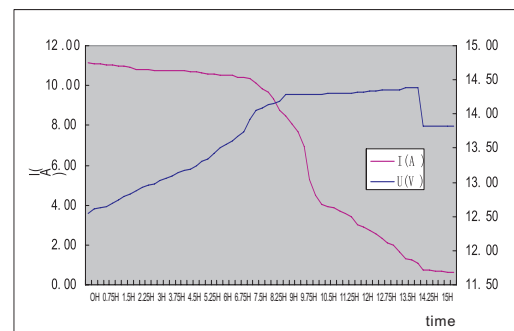
### Build-in With Big Charger:

IG3110C series long back up UPS built-in with 10 or 20 Amp charger for up to 200Ah battery.

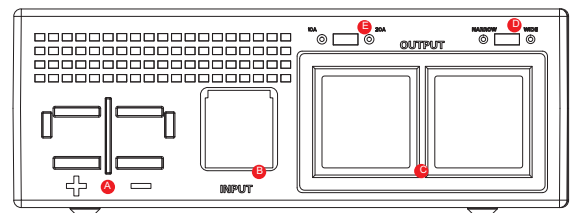
### Full Protection:

Protection for low battery voltage, overload, output short circuit and over-temperature. Restrain surge interference, eliminate noise, protection for Thunderstriking, provide the reliable power to the Home appliances

Inverter intelligent charging curve



### Back Panel Description:



- Ⓐ DC Input Connector
- Ⓑ AC Input Connector
- Ⓒ Output Receptacle
- Ⓓ Input Voltage Range Selector
- Ⓔ Current Optional

## UPS Power Solutions Expert

## IG3110C Series Technical Specifications

Model	IG3110E 500-2000VA					
	500-12	1000-12	1200-12	2000-24	1000-24	
Capacity	500VA/300W	1000VA/600W	1200VA/720W	2000VA/1200W	1000VA/600W	
Nominal Voltage	220/230/240VAC					
Nominal Frequency	50/60Hz					
Input						
Voltage Range	176VAC-280VAC (±3VAC)					
Frequency Range	50/60Hz					
Output						
Voltage Regulation	220/230/240VAC±2%					
Frequency Regulation	50/60Hz±0.1Hz					
Wave Form	Modified sine wave					
Transfer Time	Standard 2~4ms Typical 6ms					
Current						
DC Voltage	12V	12V	12V	24V	24V	
Overcharge Protection	15V	15V	15V	30V	30V	
LCD Display & LED Indicate						
AC Mode	Green lighting					
Battery Mode	Yellow lighting					
Battery Charging Mode	Green flashing every 2 second					
Overload	Red flashing every 0.5 second					
Fault	Red lighting					
Operating Environment						
Temperature	0°C ~ 40°C					
Humidity	5% ~ 95% (<40°C, Non-condensing)					
Storage Temperature	-25°C ~ 55°C					
Elevation	< 1500 m					
Noise (within 1 meter)	< 45dB					
Physics Characteristic						
Weight (KG)	N.W	2.0	2.5	2.5	2.5	2.0
	G.W	2.2	2.7	2.7	2.7	2.2
Dimensions : ( W x D x H )mm	224×225×80					

STANDARD: Conform to GB/IEC regulation: EMC:GB7260.2/IEC62040-2 GB/17626.2~5/IEC61000-4-2~5 SAFETY:GB4943

Note: Product specifications are subject to change without further notice.