

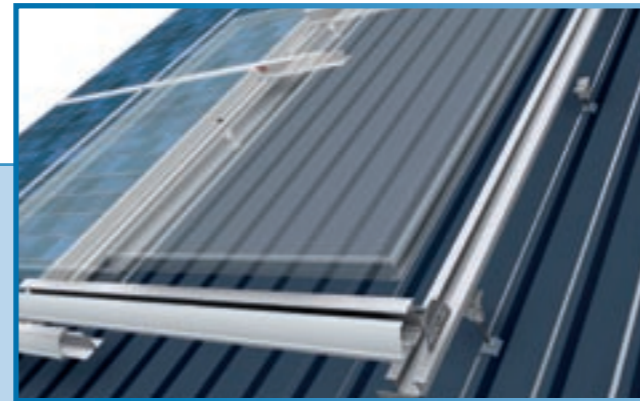
# SOL-50 ON-ROOF SYSTEM FOR TRAPEZOIDAL ROOFS AND CORRUGATED ROOFS

Secure installation for large hall roofs



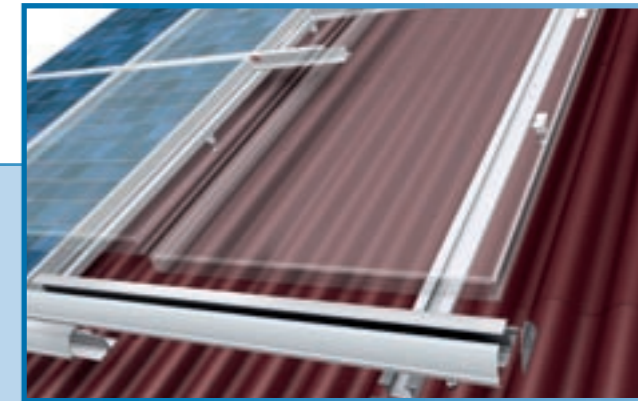
## Technical data for trapezoidal roof

**Suitable for:** Trapezoidal profile roofing  
**Roof pitch:** From 10°  
**Static:** Takes into account all snow loads and wind pressure zones  
 Building height limited to max. 18.00 m  
 Material requirement depends on location  
**PV modules:** Framed modules up to 50 mm frame height  
**Module positioning:** Horizontal and vertical  
**Height adjustment:** Up to 20 mm possible  
**Materials:** Extruded aluminium frames (EN AW 6060/6063)  
 Rust-proof steel screws  
**Colour:** Press finished, anodized and in all RAL colours



## Technical data for corrugated roof

**Suitable for:** Roofing of corrugated plates of fibre cement  
**Roof pitch:** From 10°  
**Static:** Takes into account all snow loads and wind pressure zones  
 Building height limited to max. 18.00 m  
 Material requirement depends on location  
**PV modules:** Framed modules up to 50 mm frame height  
**Module positioning:** Horizontal and vertical  
**Height adjustment:** Up to 20 mm possible  
**Materials:** Extruded aluminium frames (EN AW 6060/6063); Rust-proof steel screws  
**Colour:** Press finished, anodized and in all RAL colours



## Components



## Components

