

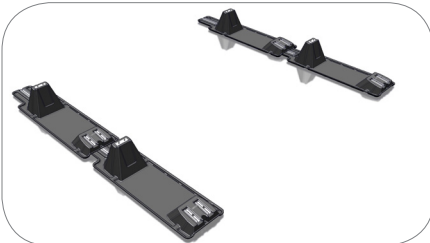
InstaRack

Available in 10 & 15 degrees

Sollega InstaRack, your simple solar racking solution for flat roof PV installations

- Simple and innovative design with minimum parts, requires only one tool for assembly
- Quick installation, up to 3 kW per person per hour
- Universal System compatible with modules 30" - 44" in width
- All top-down connections utilizing one size bolt
- Integrated grounding and wire management performed through strut rail
- Fully ballasted with optional roof anchors for seismic and high wind load applications
- Wind tunnel tested up to 145 mph, in accordance with ASCE 7-05
- One-piece, lightweight and stackable design
- Flexible system adapts to obstacles and contours to uneven roof surfaces
- Manufactured from high density polyethylene (HDPE) with built-in UV inhibitor
- Roof friendly - integrated drainage, smooth edges and low point loading
- Made in the USA and Canada

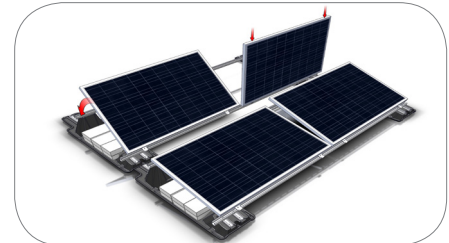
① Position InstaRacks



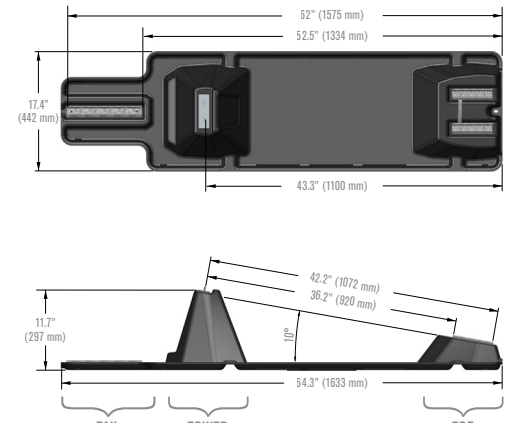
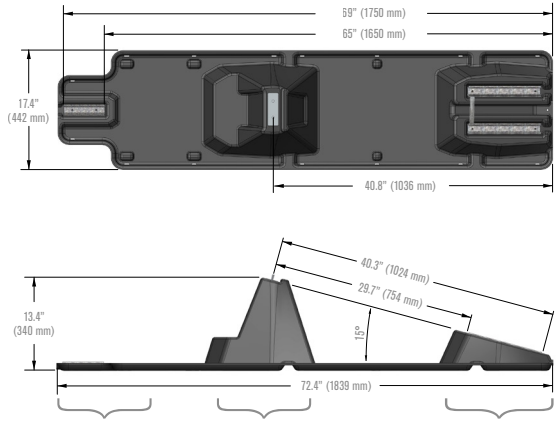


② Add Ballast and Strut



③ Attach Modules



Product Name	InstaRack 10™	InstaRack 15™
Product Image		
Tilt Angle	10°	15°
Compatible Modules	All framed modules 37.3" - 44" in width (948 mm - 1117 mm)	All framed modules 30" - 42" in width (762 mm - 1067 mm)
Row Spacing	Maximum: 62" (1575 mm) Minimum: 53" (1346 mm)	Maximum: 70.5" (1791 mm) Minimum: 65.5" (1664 mm)
Weight	12 lbs. (5.4 kg)	17 lbs. (7.7 kg)
Ballast Requirements	4" x 8" x 16" CMU (31.5 lbs each), based on ASTM designation C1491 - 01a	
Material	High-Density Polyethylene (HDPE), minimum 35% recycled content	
Module Orientation	Landscape	
Wind Load Criteria	Meets ASCE 7-05 up to 120 mph	
UL Material Rating	UL 94-HB	
Warranty	25 years	
Dimensions	(LxWxH) 64.3" x 17.4" x 11.7" 1633 mm x 442 mm x 297 mm	(LxWxH) 72.4" x 17.4" x 13.4" 1839 mm x 442 mm x 340 mm
	 <p>Top view dimensions: 52" (1575 mm), 52.5" (1334 mm), 43.3" (1100 mm), 17.4" (442 mm)</p> <p>Side view dimensions: 42.2" (1072 mm), 36.2" (920 mm), 11.7" (297 mm), 10°, 64.3" (1633 mm)</p> <p>Labels: TAIL, TOWER, TOE</p>	 <p>Top view dimensions: 69" (1750 mm), 65" (1650 mm), 40.8" (1036 mm), 17.4" (442 mm)</p> <p>Side view dimensions: 40.3" (1024 mm), 29.7" (754 mm), 13.4" (340 mm), 15°, 72.4" (1839 mm)</p> <p>Labels: TAIL, TOWER, TOE</p>